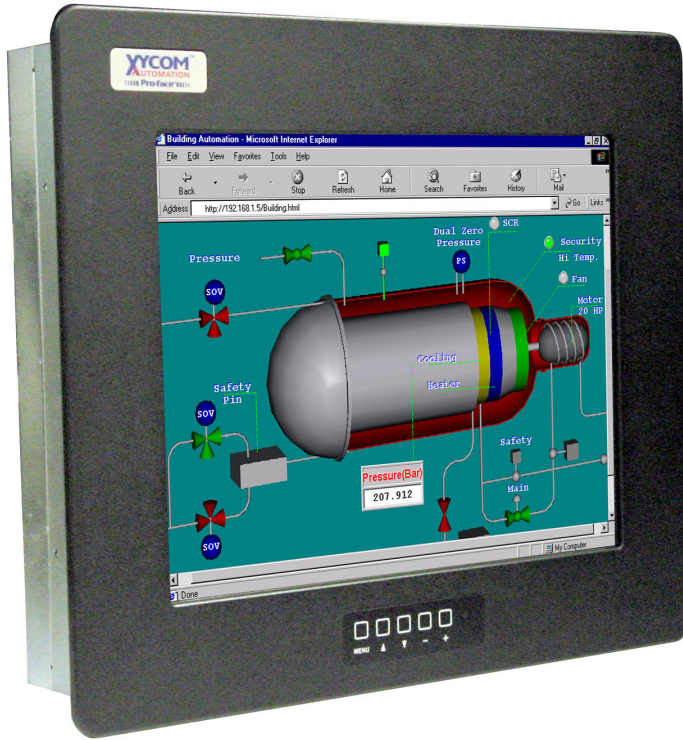


# 5015T/R2 Industrial Flat Panel Touch Monitor

DS-300005(C)



*XYCOM Automation's 5015T/R2 15" industrial flat panel touch monitor offers state-of-the-art performance and features at a very competitive price.*

## FEATURES

- 2-year warranty
- State of the art 15" TFT XGA color LCD supporting resolutions up to 1024 x 768 @ 75Hz, 265K colors
- Sophisticated scaling engine produces excellent full screen images in all common VESA modes automatically
- Analog resistive touch screen and driver software standard (USB or Serial connections available - only one cable can be used at a time)
- Mounts in 5015T or XT1502 cutouts with included mounting spacers
- Shallow mounting depth - only 2.85" deep
- Powder coated aluminum front bezel (stainless steel front bezel optional)
- Provision for 75mm VESA arm mounting on back of monitor
- Simple installation using mounting clips - no studs
- 24V DC input power option
- Up to 50' cables (10' USB and Serial touch screen cables included)
- NEMA 4/4X/12 front panel
- UL, cUL & CE
- UL listed for Hazardous Locations: Class I, Division 2, Groups A, B, C, D; Class II, Division 2, Groups F and G; Temp. Code: T6

### Superb Display Quality

The 5015T/R2 delivers superb display quality up to 1024 x 768 (XGA) resolution with a color depth of 265K colors.

The latest generation scaling capability assures high quality, full-sized images for all standard VESA modes up to XGA @ 75Hz.

### Precision Manufacturing for Harsh Environments

The 5015T/R2 is constructed using an aluminum front bezel providing

trouble free service in hostile NEMA 4/4X/12 environments. An optional stainless steel front bezel is now available. The 5015T/R2 now offers a 24V DC input power option.

### Fits Your Needs

Other features include Hazardous Location - UL Class 1 Division 2, Class 2 Division 2 compliance, an integrated analog resistive touch screen and special mounting clips for quick and easy installation.

All units are shipped with ten foot USB and serial touch screen cables and drivers. Only one cable can be used at a time.

### Cutout Compatibility

The 5015T/R2 mounts easily in previous 5015T and XT1502 monitors cutouts with the included mounting spacers. Requires no change in existing panel cutout.

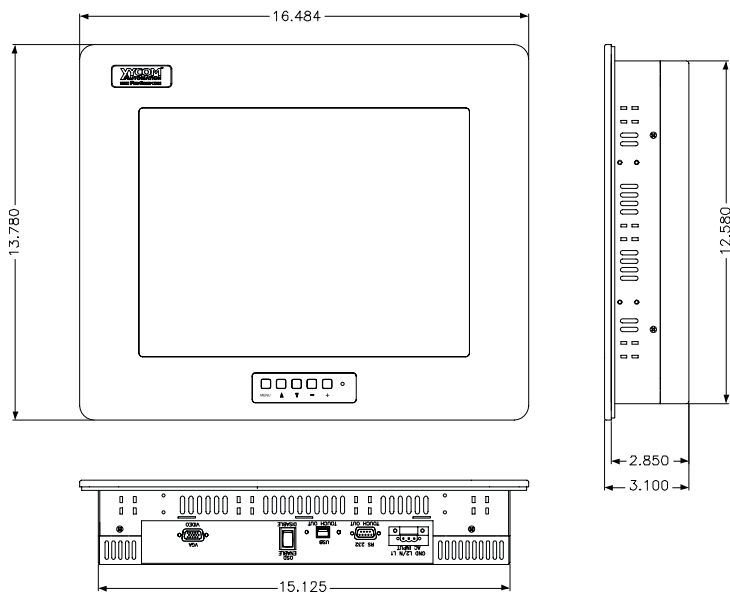


# DISPLAY SPECIFICATIONS

## 5015T/R2

<b>Display Size</b> (Active Area H x V)	11.97" (304.1 mm) x 8.98" (228.1 mm)
<b>Resolution</b> (1 pixel = R+G+B dots)	XGA: 1024 x 768
<b>Display Colors</b>	265K
<b>Brightness</b>	350 Nit Typical
<b>Contrast Ratio</b>	400:1 Typical
<b>Horizontal Viewing Angle</b>	150°
<b>Vertical Viewing Angle</b>	125°
<b>Backlight Life</b>	50,000 Hours

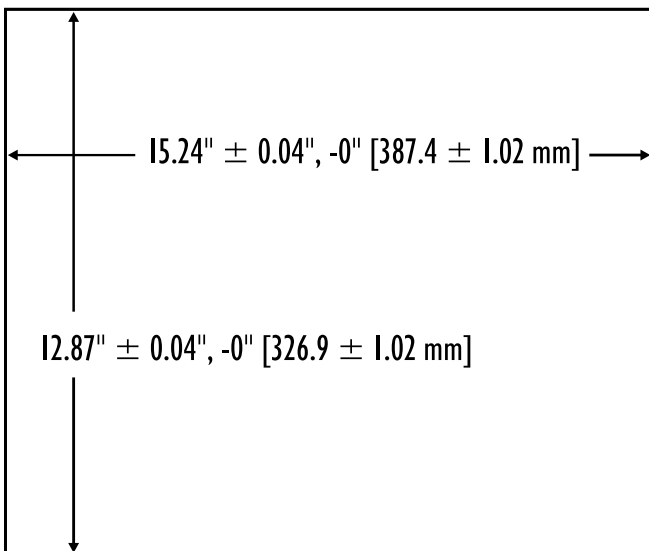
# PRODUCT AND MOUNTING DIMENSIONS



## 5015T/R2 Unit Dimensions

<b>Height</b>	16.485" (418.7 mm)
<b>Width</b>	13.78" (350 mm)
<b>Mounting Depth</b>	2.85" (72.3 mm)
<b>Weight</b>	15 lbs (7.0 kg)

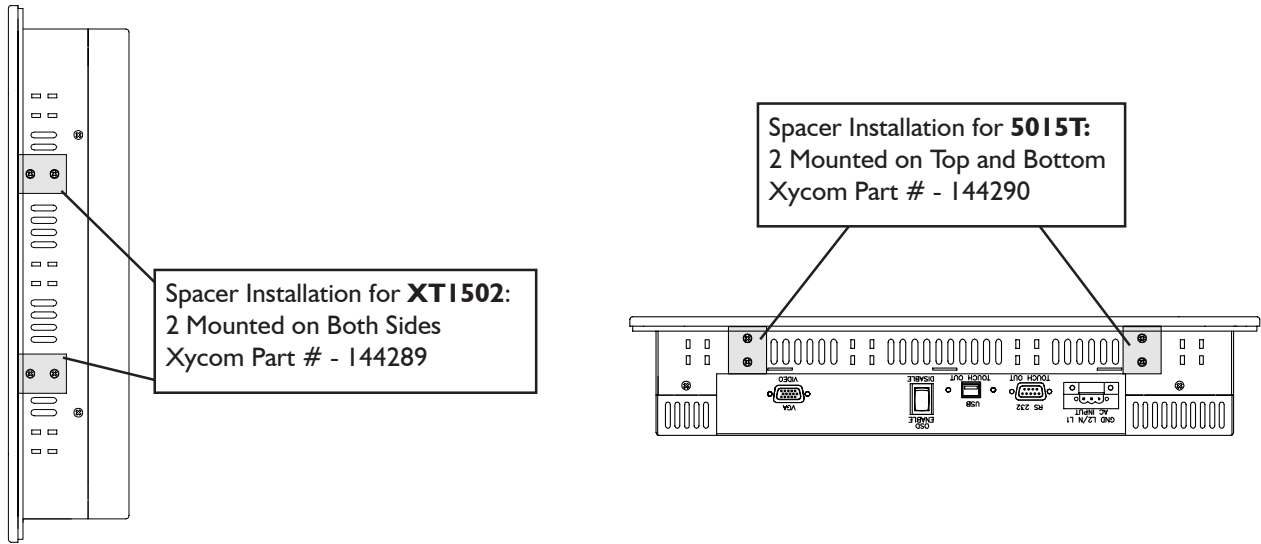
## 5015T/R2 Cutout Dimensions



## PRODUCT AND MOUNTING DIMENSIONS (continued)

### 5015T/R2 Mounting with Spacers

The 5015T/R2 will mount directly in previous 5015T version and XT1502 cutouts with included mounting spacers. See diagrams below.



## PRODUCT SPECIFICATIONS AND RATINGS

### Environmental

	Operating	Nonoperating
<b>Thermal</b>	0°C to 50°C	-20°C to 60°C
<b>Humidity</b>	20% to 80% RH, noncondensing	20% to 80% RH, noncondensing
<b>Shock</b>	15g peak acceleration, 11 msec duration	30g peak acceleration, 11 msec duration
<b>Vibration 5-2000 Hz</b>	.006" peak to peak displacement 1.0g maximum acceleration	.015" peak to peak displacement 2.5g maximum acceleration
<b>Altitude <sup>a</sup></b>	Sea level to 10,000 ft.	Sea level to 40,000 ft.

<sup>a</sup> Consistent with internal component specifications.

### Electrical

<b>AC power</b>	100 - 240V AC, 0.6A maximum, 50/60 Hz, 27 W nominal*
<b>DC Power</b>	18V DC - 30V DC @ 1.4A maximum, 26 W nominal*, inrush current - 22 A max @24 V DC

\* Nominal Power is measured for a base configuration only. Any additional expansion and/or devices will increase the input power required.

### Front Panel

- NEMA 4/4X/12 and IP65

### Regulatory Compliance

CE

- EN 55022: Class A
- EN 61000-6-2
- EN 60950-1
- EN 61000-3-2, Class A
- EN 61000-3-3

FCC

- 47 CFR, Part 15, Class A

### Safety Agency Approvals:

- UL 508 Listed
- UL 1604 Listed\*
- cUL CSA C22.2, #142 Listed
- cUL CSA C22.2, #213 Listed\*

\* Class I, Division 2, Groups A, B, C, D;  
Class II, Division 2, Groups F and G;  
Temp. Code: T6

## ORDERING INFORMATION

To create an order number, follow the conventions defined by the example order numbers and product configurations.

### Example Order Number

Order Number	Description
<b>5015T/R2</b>	15-inch NEMA 4/4X/12 industrial flat panel TFT XGA (1024 x 768) color monitor with resistive touchscreen. Includes AC Power Supply, 10 ft. USB and Serial touch screen cables*, mounting hardware, documentation and touchscreen drivers

5015T/R2-

**Power Supply**

blank AC Power Supply  
-24V 24V DC Power Supply

**Bezel**

blank Powder-coated Aluminum Bezel  
-S 303 Stainless Steel Bezel <sup>a</sup>

\* Only one cable can be used at a time.

<sup>a</sup> Screen adjustment buttons will be mounted on rear with Stainless Steel Bezel option.

### Cables (ordered separately)

Order Number	Description
<b>3000-CBL-10V</b>	10 ft. (3 m) coaxial VGA cable [male-male]; connects monitor to standard VGA card
<b>3000-CBL-25V</b>	25 ft. (7.5 m) coaxial VGA cable [male-male]; connects monitor to standard VGA card
<b>3000-CBL-50V</b>	50 ft. (15 m) coaxial VGA cable [male-male]; connects monitor to standard VGA card
<b>CBL-SER10MF</b>	10 ft. (3 m) serial communication cable
<b>CBL-SER25MF</b>	25 ft. (7.5 m) serial communication cable
<b>CBL-SER50MF</b>	50 ft. (15 m) serial communication cable
<b>3000-USB-03AB</b>	3 ft. (1 m) USB Touch Cable
<b>3000-USB-10AB</b>	10 ft. (3 m) USB Touch Cable

### Adapter Plates for 5015T/R2 Monitors

Order Number	Description
<b>MTG-RM5015T/R2</b>	Adapter panel for mounting 5015T/R2 ( <b>NOT 5015T</b> ) in 19" rack. Panel measures 14.00" (8U) in height.
<b>MTG-RM5015</b>	Adapter panel for mounting 5015T ( <b>NOT 5015T/R2</b> ) in 19" rack. Panel measures 14.00" (8U) in height.
<b>MTG-PM5015-3015</b>	Adapter plate for panel mounting a 5015T or 5015T/R2 in place of a 3015. Requires a minimum of 15.4" of vertical panel space
<b>MTG-PM5015-9407</b>	Adapter plate for panel mounting a 5015T or 5015T/R2 in place of a 9407. Requires a minimum of 15.4" of vertical panel space

Xycom Automation  
750 North Maple Road  
Saline, MI 48176  
734-429-4971  
Fax: 734-429-1010  
<http://www.xycom.com>



© 2003-2006 Xycom Automation. Specifications may change without notice.  
Xycom Automation is a trademark of Xycom Automation. Other brand or product names are the property of their respective owners.