

3400 Series Flat Panel Industrial PCs



Xycom Automation's open solutions connect to other automation standards with industrial PCs that are tough enough for plant floor use. (Our standard

PC configurations meet the strict specifications for use in hazardous locations and Europe's CE mark.) Based on CPU boards designed specifically for industrial automation, these systems provide the capabilities required by demanding applications. With an installed base of 180,000 systems, our industrial PC products are successfully applied in manufacturing and continuous process environments.

Easy-to-Read, Sharp Displays

We offer a range of displays from 7.7" VGA to

12.1" SVGA displays. An optional analog resistive touchscreen provides a flexible, easy-to-use interface for operator input. Keypad options provide legend and keycode flexibility while maximizing display space.

FEATURES

- Preloaded with MS-DOS, Windows® 95, 98, or Windows NT® operating system
- Built-in 10/100 BaseT Ethernet port
- PC/104 expansion
- 7.7" to 12.1" flat panel color displays
- Reprogrammable keypad, analog resistive touchscreen, or both for operator input
- AMD™ 5X86 processor
- Up to 64 MB DRAM
- Floppy drive option
- 6.0 GB (or larger) hard drive
- Flash drive option
- Parallel, RS-232 and RS-485, PS/2 mouse and keyboard ports
- IrDA-compatible infrared port
- NEMA 4/4X/12 front panel
- UL listed for hazardous locations: Class I, Division 2, Groups A, B, C, D; Class II, Division 2, Groups F and G

Meets High Standards

To survive on the plant floor, our PCs meet NEMA 4/4X/12 front panel, FCC, UL, and European CE mark requirements. Xycom Automation also leads the industry in reliability, service, and support with an optional five year warranty unmatched in the industry.

Open Platform

Built-in Ethernet allows you to connect these units to networks at startup with little effort. With a preloaded Windows operating system, you can communicate with locally or Ethernet connected products and databases through Microsoft and other enabling technologies—including ActiveX, OPC, and standard DDE. Exchange plant floor data with office applications and see what's happening from the plant floor to corporate headquarters.

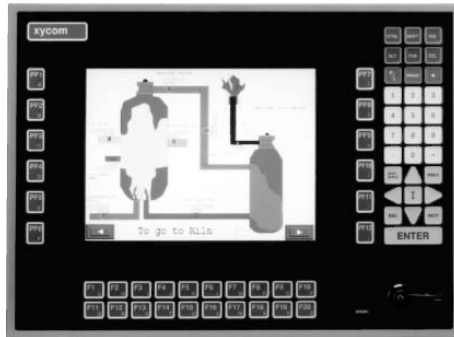
Fits Your Needs

You can configure and reconfigure Xycom Automation's industrial PCs to fit nearly any application through a wide variety of standard technologies. Our industrial PCs make it easy for end users and vendors to use cost-effective industry-standard components, storage options, PC/104 expansion, and programmable keypads for application specific requirements.

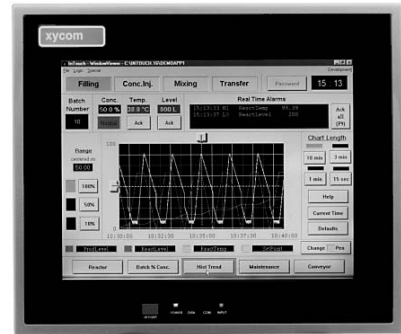
PRODUCT CONFIGURATIONS



Model	3408KP	3408T
Display	7.7" flat panel color display, 640 x 480 (VGA)	7.7" flat panel color display, 640 x 480 (VGA)
Operator Input	51-position keypad	Analog resistive touchscreen
Preloaded OS	Microsoft® DOS, Windows® 95, Windows® 98, Windows NT®	Microsoft® DOS, Windows® 95, Windows® 98, Windows NT®
Ethernet	Built-in 10/100 BaseT	Built-in 10/100 BaseT
Expansion	PC/104 expansion (up to two cards)	PC/104 expansion (up to two cards)



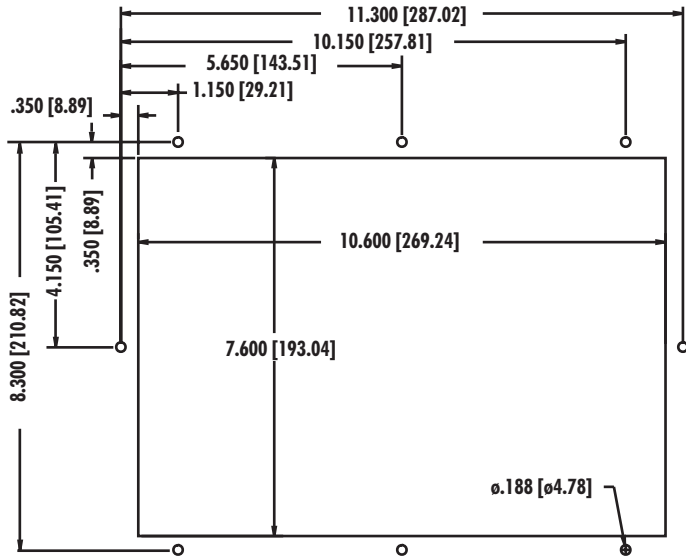
Model	3410KP(T)	3410T
Display	10.4" flat panel color display, 640 x 480 (VGA)	10.4" flat panel color display, 640 x 480 (VGA)
Operator Input	63-position keypad (touchscreen option)	Analog resistive touchscreen
Preloaded OS	Microsoft® DOS, Windows® 95, Windows® 98, Windows NT®	Microsoft® DOS, Windows® 95, Windows® 98, Windows NT®
Ethernet	Built-in 10/100 BaseT	Built-in 10/100 BaseT
Expansion	PC/104 expansion (up to two cards)	PC/104 expansion (up to two cards)



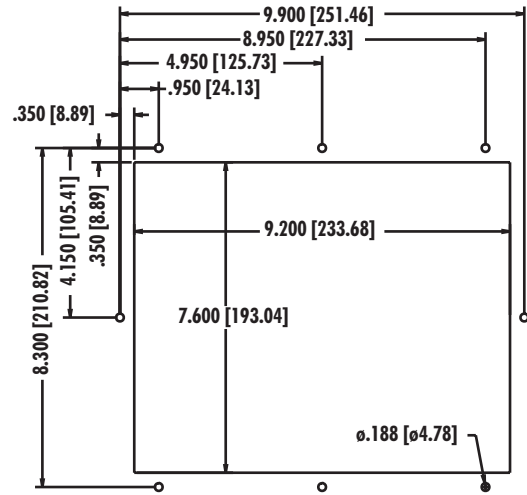
Model	3412KP(T)	3412T
Display	12.1" flat panel color display, 800 x 600 (SVGA)	12.1" flat panel color display, 800 x 600 (SVGA)
Operator Input	63-position keypad (touchscreen option)	Analog resistive touchscreen
Floppy Drive	Option	Option
Preloaded OS	Microsoft® DOS, Windows® 95, Windows® 98, Windows NT®	Microsoft® DOS, Windows® 95, Windows® 98, Windows NT®
Ethernet	Built-in 10/100 BaseT	Built-in 10/100 BaseT
Expansion	PC/104 expansion (up to two cards)	PC/104 expansion (up to two cards)

PRODUCT AND MOUNTING DIMENSIONS

3408KP Mounting



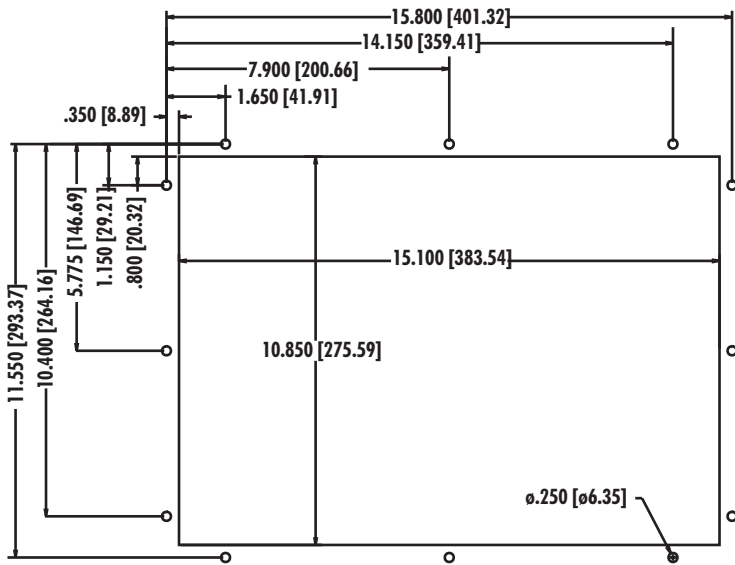
3408T Mounting



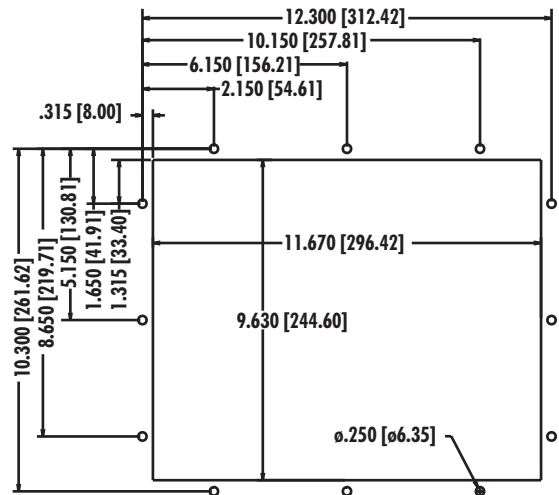
3408 Unit Dimensions

Model	3408KP	3408T
Height	9.00" (228.6 mm)	9.00" (228.6 mm)
Width	12.00" (304.8 mm)	10.60" (269.2 mm)
Depth	4.30" (109.2 mm)	4.20" (106.7 mm)
Mounting Depth	3.30" (83.8 mm)	3.20" (81.3 mm)
Weight	9 lbs (4.1 kg)	9 lbs (4.1 kg)

3410KP(T) Mounting



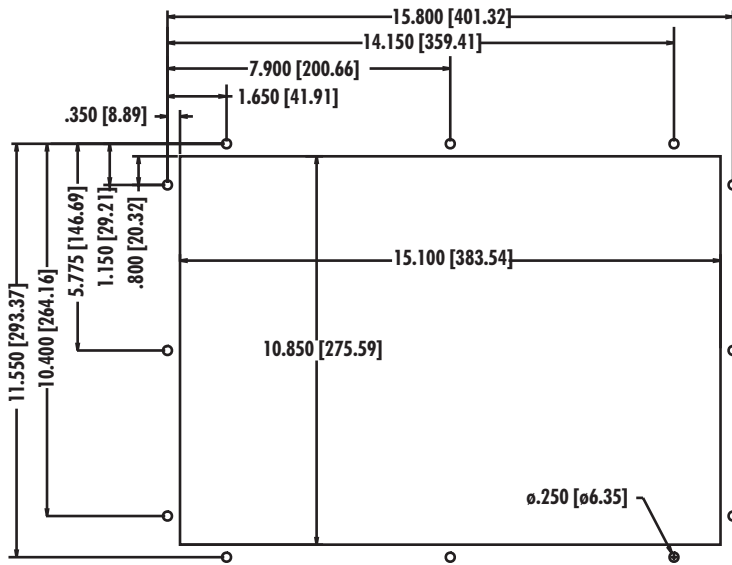
3410T Mounting



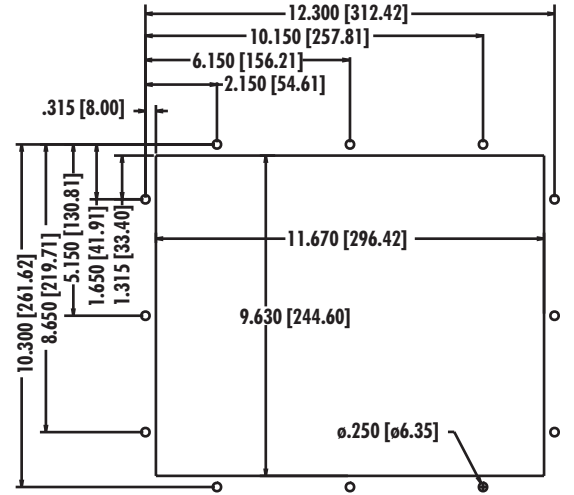
3410 Unit Dimensions

Model	3410KP(T)	3410T
Height	12.25" (311.5 mm)	11.00" (279.4 mm)
Width	16.50" (419.1 mm)	13.00" (330.2 mm)
Depth	4.50" (114.3 mm)	4.50" (114.3 mm)
Mounting Depth	3.50" (88.9 mm)	3.50" (88.9 mm)
Weight	12 lbs (5.5 kg)	11 lbs (5.0 kg)

3412KP(T) Mounting



3412T Mounting



3412 Unit Dimensions

Model	3412KP(T)	3412T
Height	12.25" (311.5 mm)	11.00" (279.4 mm)
Width	16.50" (419.1 mm)	13.00" (330.2 mm)
Depth	4.50" (114.3 mm)	4.50" (114.3 mm)
Mounting Depth	3.50" (88.9 mm)	3.50" (88.9 mm)
Weight	12 lbs (5.5 kg)	11 lbs (5.0 kg)

PRODUCT SPECIFICATIONS AND RATINGS

Environmental

	Operating	Nonoperating
Thermal	0C to 50C	-20C to 60C
Humidity	20% to 80% RH, noncondensing	20% to 80% RH, noncondensing
Shock^a	15g peak acceleration, 11 msec duration	30g peak acceleration, 11 msec duration
Vibration 5-2000 Hz^a	.006" peak to peak displacement 1.0g maximum acceleration	.015" peak to peak displacement 2.5g maximum acceleration
Altitude	Sea level to 10,000 ft.	Sea level to 40,000 ft.

^aThese values are with solid state hard drives and not rotating media drives.

Electrical

Power supply	40 Watt power
AC power	90 to 250V AC, autoranging, 50-60 Hz, 1A (maximum)
DC power (option)	18 to 36V DC, 24V nominal, 2.5A (maximum)
Available power^b	+5V@.8A +12V@.25A -12V@.25A

^bTotal not to exceed 6 watts

Front Panel

- NEMA 4/4X/12 IP65

Regulatory Compliance

CE

- EN 55022
- EN 50082-2
- EN 60950

FCC

- 47 CFR, Part 15, Class A

Safety Agency Approvals

UL

- UL 1950 ITE
- UL 1604

CUL

- CSA-C22.2, #950 ITE
- CSA-C22.2, #213

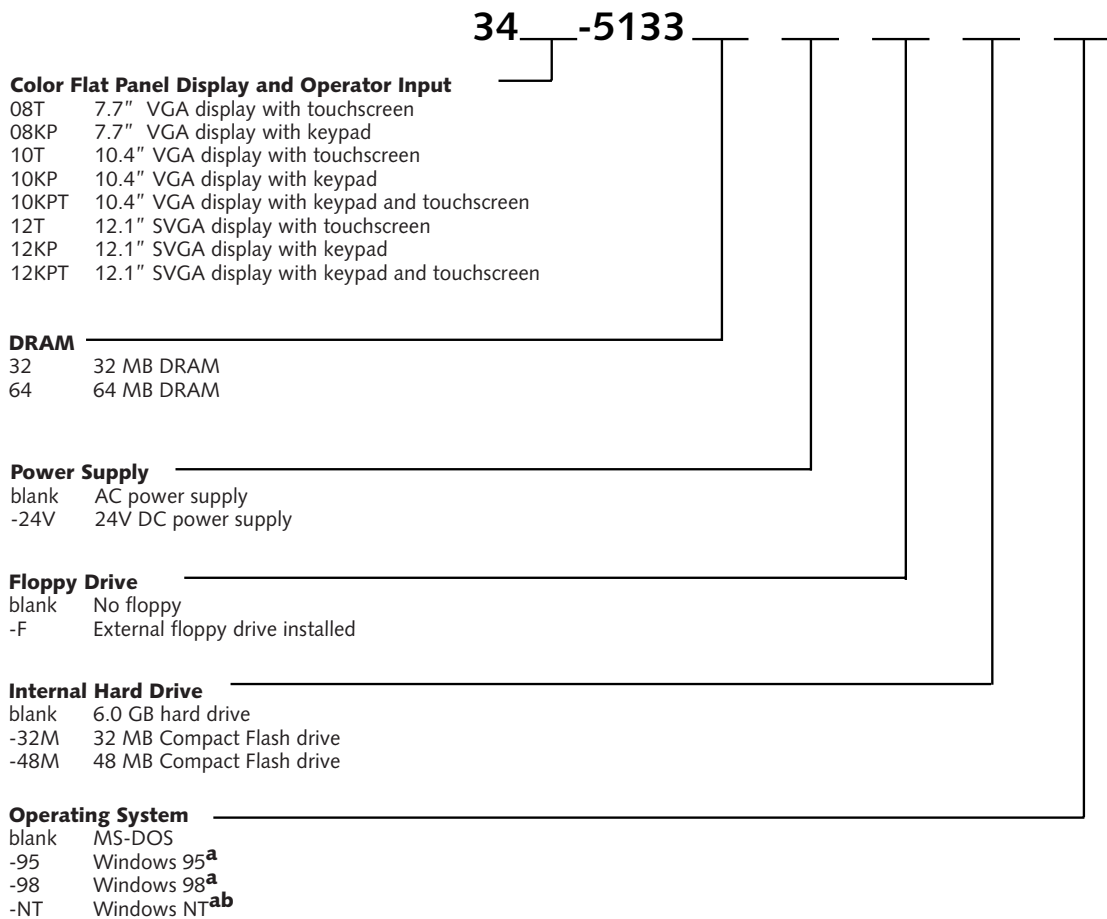
ORDERING INFORMATION

To create an order number, follow the conventions defined by the example order numbers and product configurations.

Example Order Number

Order Number	Description
3408T-513332-95	3400 series workstation with 7.7" color display, analog resistive touchscreen, 32 MB RAM, Windows® 95 Operating System preloaded
3410KP-513364-NT	3400 series workstation with 10.4" color display, reprogrammable keypad, 64 MB RAM, Windows NT® Operating System preloaded

Product Configuration



^aRequires 6.0 GB hard drive ^bRequires 64 MB DRAM

Xycom Automation, Inc.
734-429-4971 • Fax: 734-429-1010
<http://www.xycom.com>

Canada Sales: 905-607-3400
Northern Europe Sales: +44-1604-790-767
Southern Europe Sales: +39-011-770-53-11



©2001 Xycom Automation, Inc. Specifications may change without notice. Xycom Automation and OpenHMI are trademarks of Xycom Automation. Other brand or product names are the property of their respective